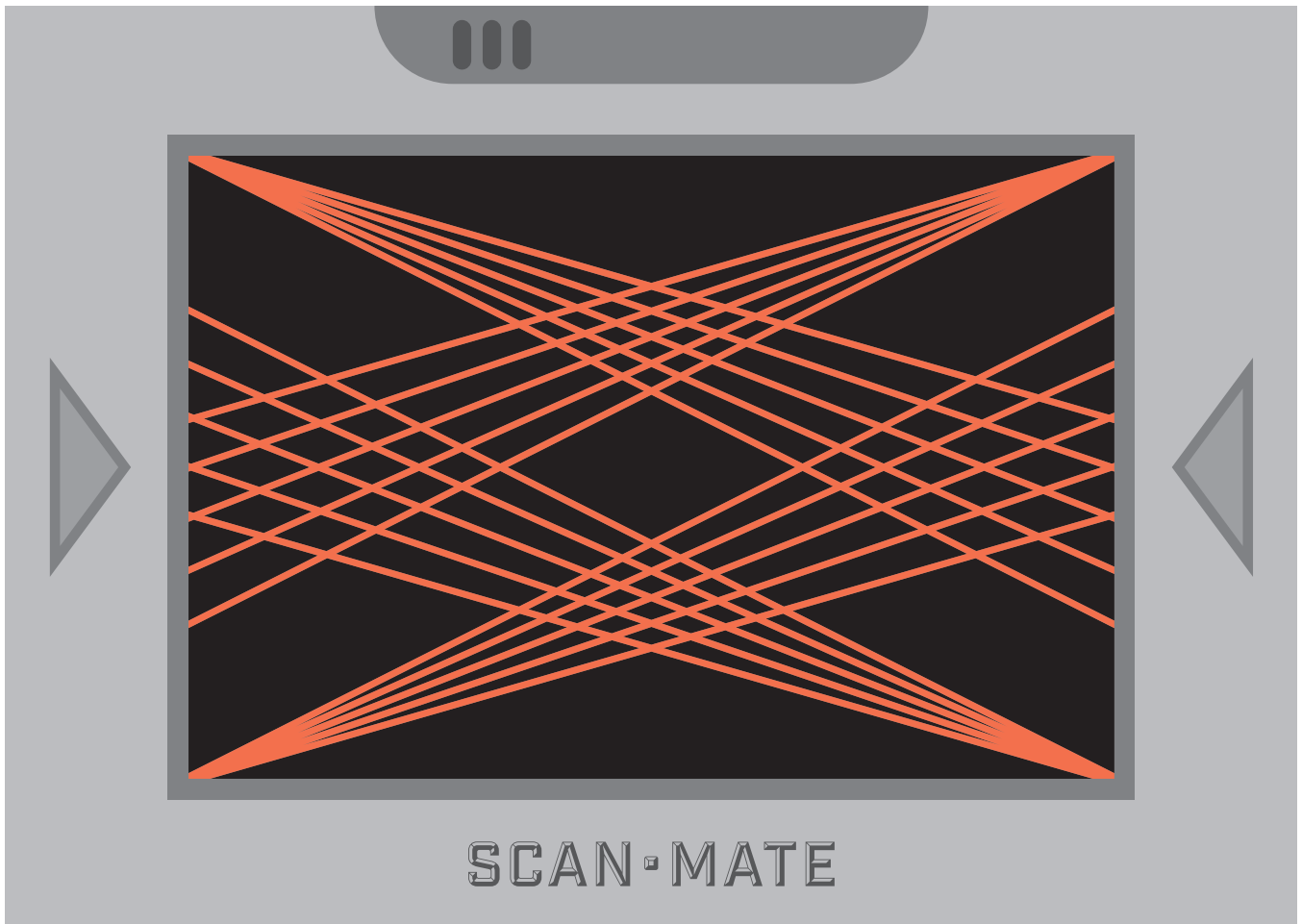




little



LIBRARY





This library card belongs to:



5 2 4 4 5 5 5 2 4 3 2

little **LIBRARY**

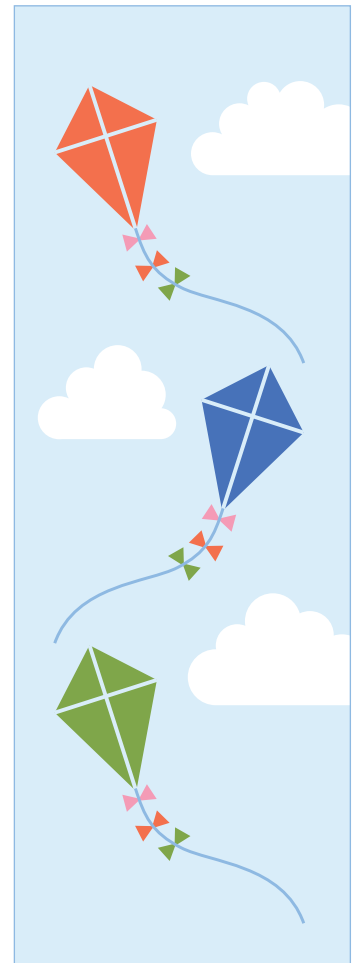
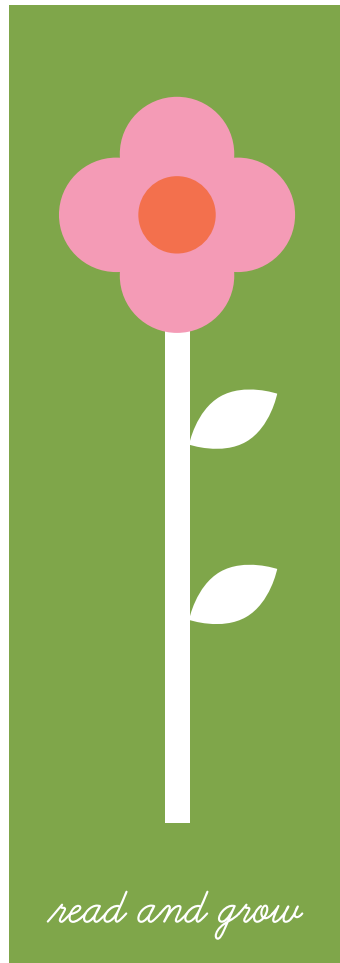
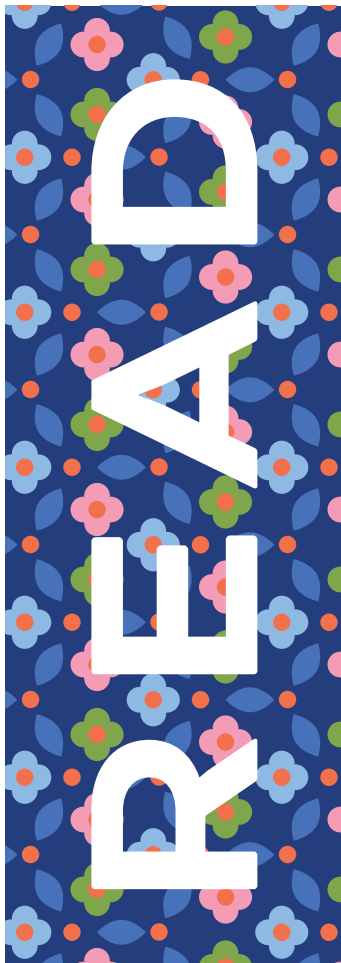


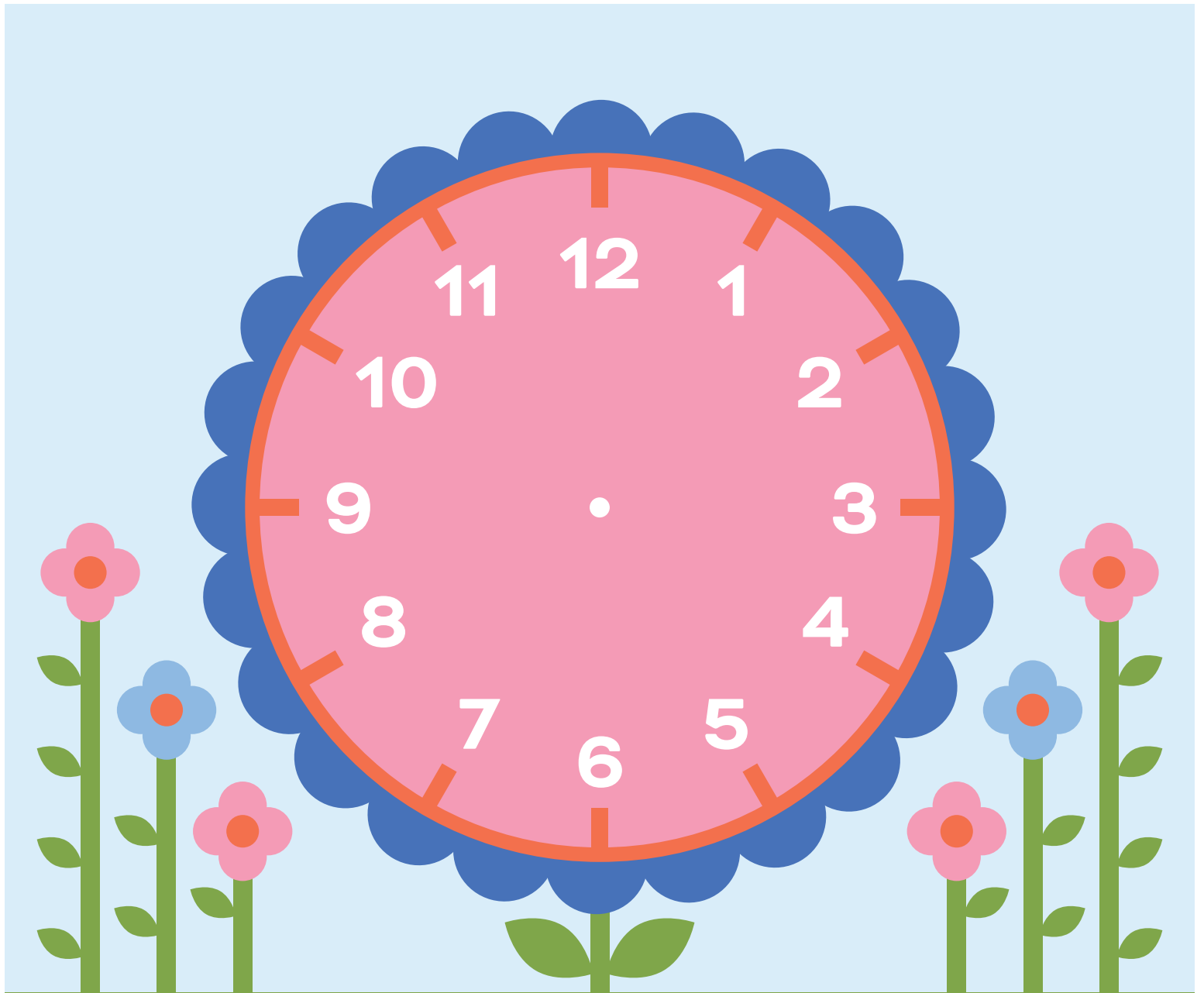
This library card belongs to:



5 3 7 8 9 0 1 9 8 2 4 0

little **LIBRARY**





Join us for story time!

Directions: Cut off this portion of page and cut out clock hands. Create holes in center of clock face and at the bottom of clock hands. Use a brad to secure clock hands to clock face.



CLOSED

OPEN

**CIRCULATION
DESK**

Librarian

Librarian

**CHECK OUT
BOOKS HERE**

**QUIET
ROOM**

**BOOK
RETURN**

*no talking
please*



Chapter Books

Fiction

Picture Books

Non-Fiction

Periodicals

A

H

O

V

B

I

P

W

C

J

Q

X

D

K

R

Y

E

L

S

Z

F

M

T

G

N

U